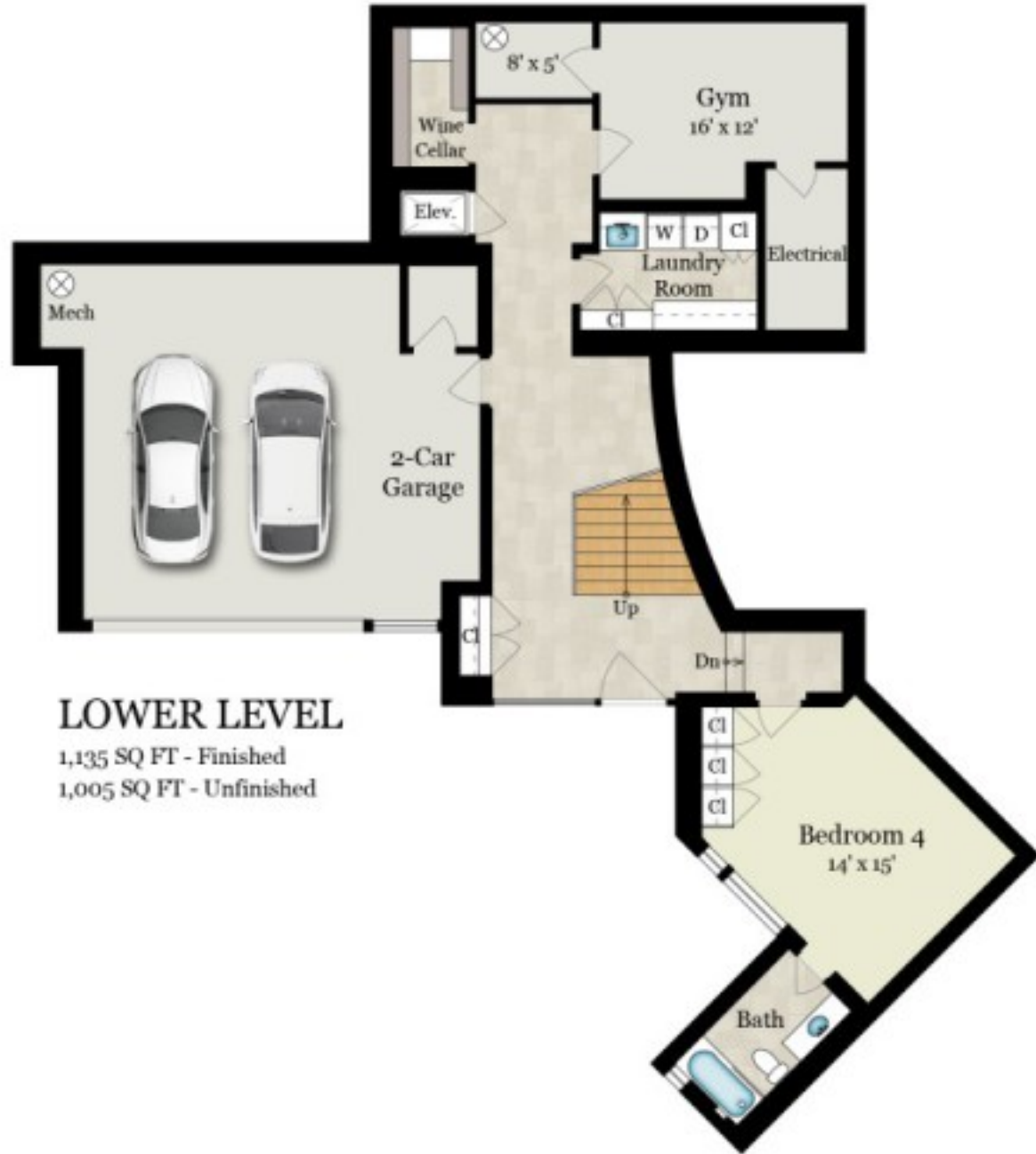


1925 STRAITS VIEW DRIVE

TIBURON, CA 94920



MAIN LEVEL
4,265 SQ FT



LOWER LEVEL
1,135 SQ FT - Finished
1,005 SQ FT - Unfinished

Estimated Total Finished Square Footage: 5,400 SQ FT
Above-Grade: 4,265 SQ FT Below-Grade: 1,135 SQ FT
Plus 680 SQ FT 2-Car Garage on Lower Level
Plus 325 SQ FT Gym on Lower Level
Calculated per ANSI Standard Z765-2003.

*Estimated Total Finished & Unfinished Square Footage: 6,405 SQ FT



PACIFIC UNION
INTERNATIONAL

Rendering by Floor Plan Visuals.
All measurements are approximate. While deemed reliable, no information on these floor plans should be relied upon without independent verification.

Bill Smith
415.902.4456
Bill@BillSmithRealEstate.com

Ann Aylwin
415.902.3909
Ann@BillSmithRealEstate.com

1925 STRAITS VIEW DRIVE

TIBURON, CA 94920



SITE PLAN



**PACIFIC
UNION**
INTERNATIONAL

Rendering by Floor Plan Visuals.
All measurements are approximate. While deemed reliable, no information
on these floor plans should be relied upon without independent verification.

Bill Smith
415.902.4456
Bill@BillSmithRealEstate.com

Ann Aylwin
415.902.3909
Ann@BillSmithRealEstate.com